

Illawarra Coke Company 1996-2012



Hot coke being pushed into the hot car to take it to the quench tower

In 1996 the present owners purchased the Illawarra Coke Company Pty Limited (ICC) which operates both Coalcliff and Corrimal Cokeworks. ICC is the only independent coke producer in Australia.

Corrimal Cokeworks produces approximately 105,000 tonnes of the 250,000 tonnes of coke per annum produced by ICC's two sites. The Illawarra offers a ready supply of the Bulli seam high grade hard coking coal which ensures the consistent quality of ICC's coke.

The company supplies premium grade metallurgical and foundry coke to Australian and overseas base metals producers for lead and zinc smelting and iron production for steelmaking. ICC's large, strong and abrasion resistant coke has specific properties which ensure optimum performance of cupolas and blast furnaces.

Cokemaking in 2012 is a highly mechanised process requiring specialist expertise to manage and operate to produce high quality coke; to achieve the best environmental outcomes; and to manage and operate to provide a safe working environment for ICC's employees.

Corrimal Cokeworks has been a continuous source of permanent employment for Illawarra working families for 100 years.

ICC is extremely proud of Corrimal Cokeworks' long history of cokemaking using non-recovery cokemaking technology since 1912.

illawarra cokecompany

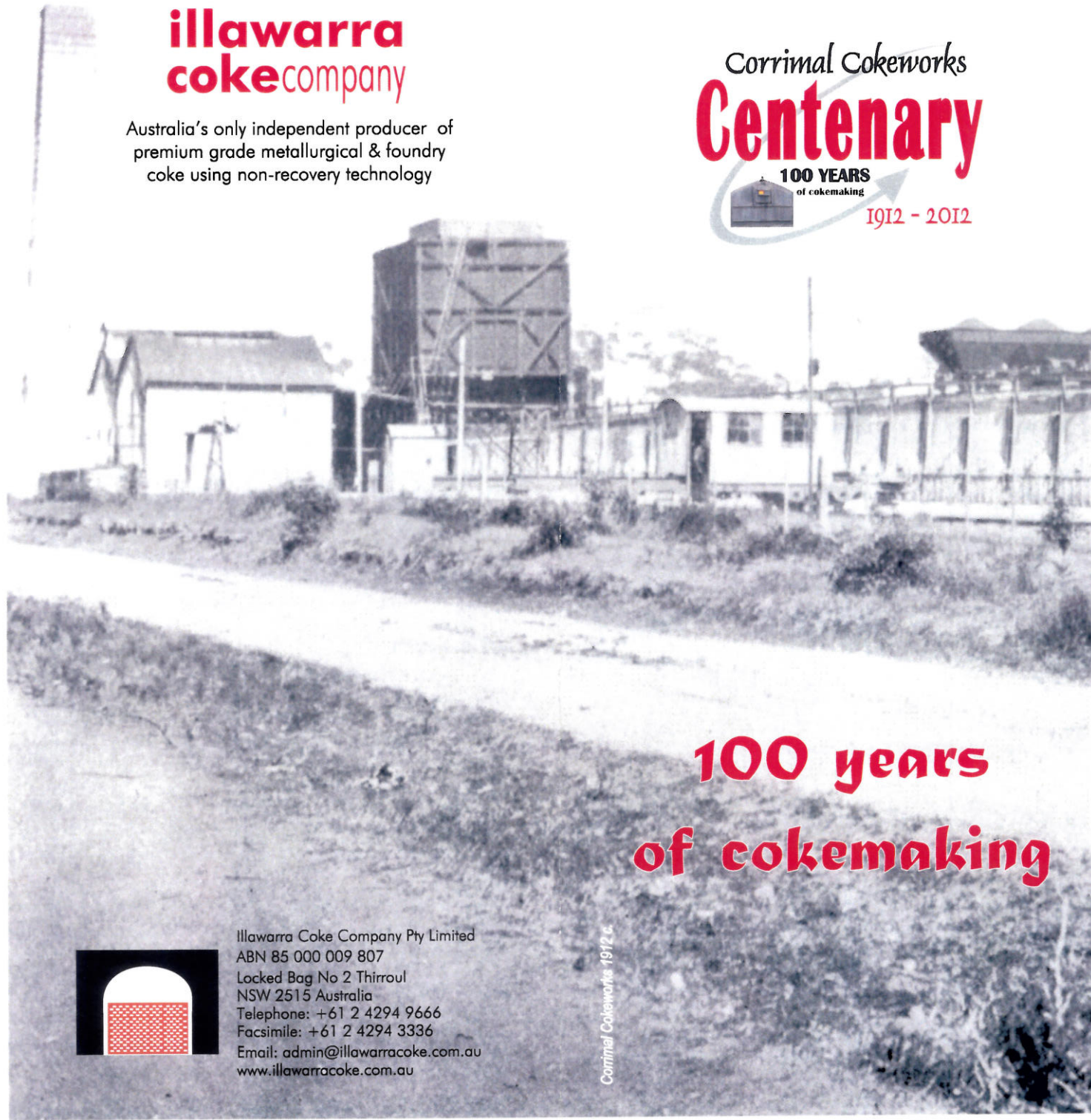
Australia's only independent producer of
premium grade metallurgical & foundry
coke using non-recovery technology

Corrimal Cokeworks Centenary



100 YEARS
of cokemaking

1912 - 2012



100 years of cokemaking



Illawarra Coke Company Pty Limited
ABN 85 000 009 807
Locked Bag No 2 Thirroul
NSW 2515 Australia
Telephone: +61 2 4294 9666
Facsimile: +61 2 4294 3336
Email: admin@illawarracoke.com.au
www.illawarracoke.com.au

Corrimal Cokeworks 1912.c

Corrimal Cokeworks

1912-2012



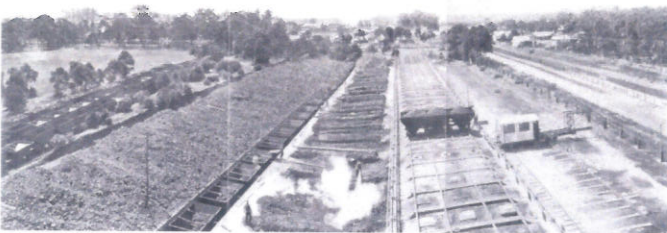
1912 c. Corrimal Cokeworks

During 1911 40 ovens (C1 battery) were constructed for the Southern Coal Company - owned by G.S. Yuill & Company Pty Ltd. Corrimal Cokeworks was commissioned in May 1912.

The Corrimal Cokeworks site was far from other development in the town when the first ovens were built. Apart from the railway line and a handful of houses within a one mile radius, the remainder of the area was native bush and paddocks.

When it was first commissioned, the on-site power house generated electricity for the Cokeworks, the Corrimal-Balgownie Colliery and the local area. Corrimal-Balgownie Colliery supplied the coal in rail wagons on a private rail line.

On Friday July 17th 1925 electricity from the Corrimal power house reached the Northern Illawarra council area. Over 400 street lamps were initially supplied.



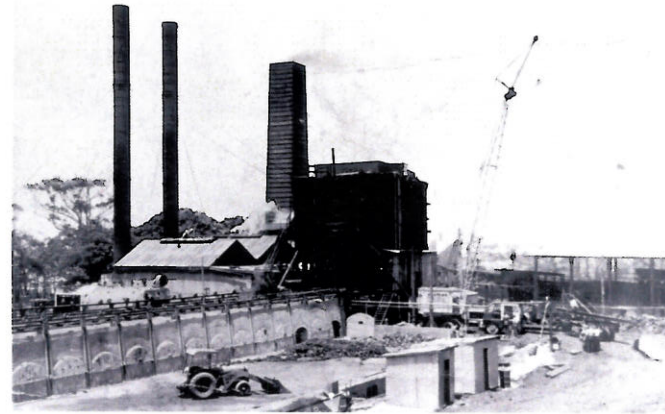
1914-1940 c. Corrimal Cokeworks

C1 battery was extended to the north in 1930 adding 10 more ovens which are still in use today. They are rectangular in shape with an arched roof. Doors at each end are used to push

the coke out of the oven. Each oven is connected to an underground flue system which enhances coking efficiency.

During the 1930s the waste gases were still used for generating all the electricity required at the Corrimal-Balgownie Colliery, the cokeworks and for the northern Illawarra Municipality.

During this period the maximum capacity of Corrimal Cokeworks was 950 tonnes of coke per week.



1959 start of construction on C2 battery

In 1959 construction began on a new oven battery (C2) with 32 ovens of a similar type to C1 battery but with a larger capacity - approximately 1.5 times the size of the C1 ovens.

During 1960 a 2,000 KW 6,600 V geared turbo-alternator set was installed in an enlarged power house, together with new and more modern switchgear. To provide steam for the generating plant, two fire-tube boilers designed to operate as coal fired, waste gas fired or mixed coal/waste gas fired boilers were installed.

The new battery of 32 ovens was commissioned in July 1962.

Australian Iron & Steel purchased Corrimal Cokeworks and Corrimal Colliery as a package in 1964. Coal deliveries were changed to road instead of by rail from Corrimal Colliery.

In 1967 the power house equipment was put up for sale. In January 1968 the power house was closed and the boilers and stack removed.

In 1969 Bellambi Coal Company purchased Corrimal Cokeworks and sourced coal from its South Bulli Mine.



1960-1980 c. Two oven batteries at Corrimal Cokeworks

In 1980 The Bellambi Coal Company Limited was taken over by Australian Coal and Coke Pty Limited and from 1982 the plant was upgraded and activities progressively automated.

A change of ownership occurred again in 1984 when Illawarra Coke Company Pty Limited, a subsidiary of Kembla Coal and Coke Pty Limited (itself a subsidiary of The Broken Hill Associated Smelters Pty Limited later known as Rio Tinto), purchased Corrimal Coke Company to add to its operation at Coalcliff.



1984 c. Corrimal Cokeworks

With the combined tonnages from both its Coalcliff and Corrimal Cokeworks, Kembla Coal and Coke in the early 1980s was the largest producer of foundry coke in Australia.

Corrimal Colliery closed in 1985. Coal for Corrimal Cokeworks continued to be sourced from local mines.

In 1985 the C1 North brick combustion stack was replaced with a metal stack.